

垃圾收費

MSW Charging



Municipal Solid Waste(MSW)charging training material for Hostels

Training Framework

1. Overview of MSW charging
2. Legislative Requirements
3. Implementation of MSW Charging in Hostels
 - Determination of the Applicable Charging Mode(s) for the Premises
 - Implementing “Charging by Designated Bags”
 - Implementing “Charging by Weight”
4. Waste Reduction and Recycling Arrangements

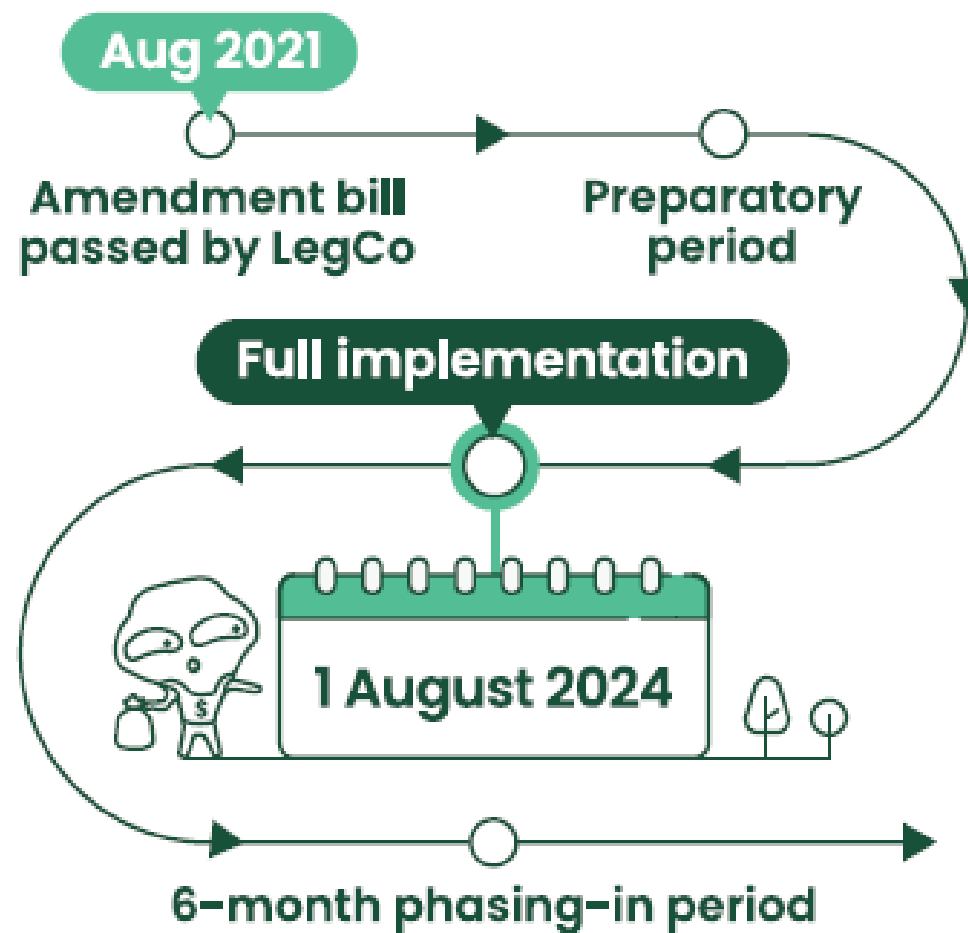
Overview of the MSW charging



Overview of MSW charging

Schedule

- ◆ MSW Charging will be implemented on 1 August 2024





Overview of MSW Charging

Background

Push for carbon emission reduction and combat climate change

Relieve the burden on landfills



Facilitate the sustainable development of related industries and the creation of green job opportunities



Overview of MSW Charging

Principle

The **more waste** you dispose of,
the **more you pay**



Based on the “**Polluter-pays**” principle, to be charged based on the quantity of waste disposed of



Regardless of which of the charging mode(s) is/are adopted, the waste producers **are responsible for the concerned charges**





Overview of MSW Charging

Coverage



Domestic
Waste



Commercial and
Industrial Waste



**Construction waste, chemical waste, and clinical waste are not
subject to the MSW charging regime**



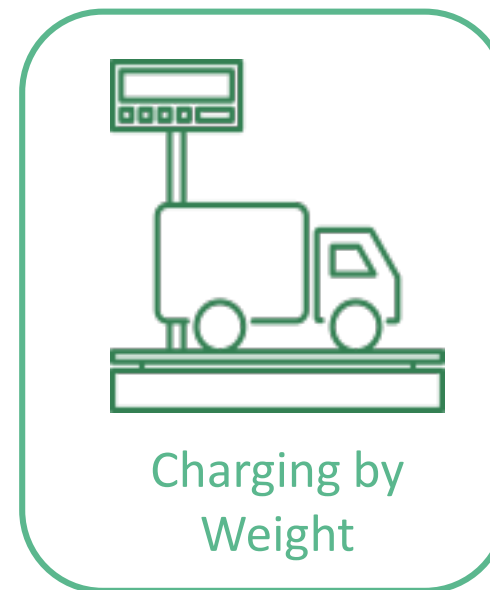


Overview of MSW Charging

Charging Modes



Or



Charging by pre-paid designated garbage bags
/designated labels

Charging by weight



The applicable charging mode(s) depends on the existing waste collection arrangements on the premises



Overview of MSW Charging

Charging Mechanism

- ◆ Waste collected by FEHD's and its contractors refuse collection vehicles (RCVs) (with rear compactor) or private waste collectors' (PWCs) RCVs with rear compactors. (Mainly suitable for **general waste in hostel**.)
- ◆ Waste disposed at **the Food and Environmental Hygiene Department's (FEHD) refuse collection point**. (Mainly suitable for waste disposed of by producers themselves/ hired cleansing workers to dispose of producers' waste.)



FEHD's and other contractors' RCVs



PWC's RCVs with rear compactors



Off-Street RCPs



Bin Sites

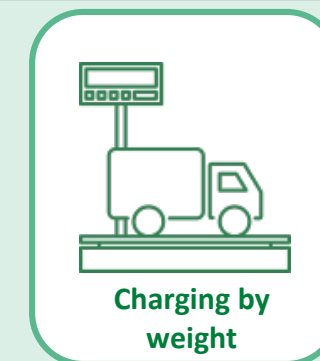


Charging by designated bags/labels

- ◆ Waste collected by **Private waste collectors' (PWCs) RCVs without rear compactors**. (Mainly suitable for hostel to dispose of waste that is **oversized, irregularly shaped such as furniture**.)



PWC's RCVs without rear compactors



Charging by weight

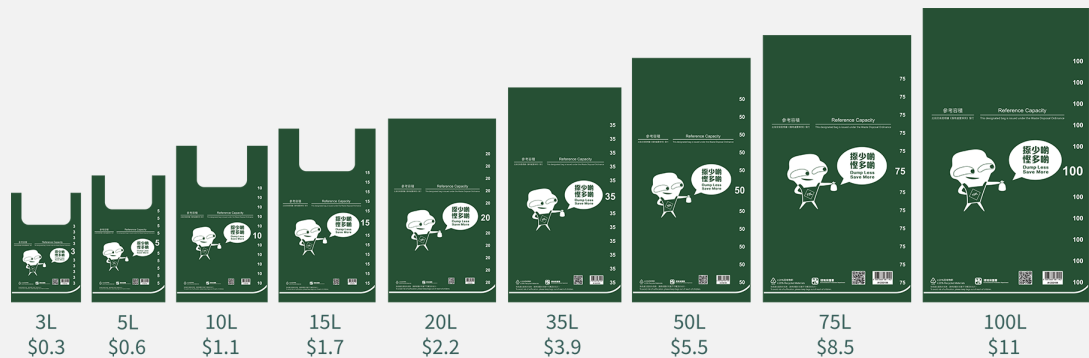


Overview of MSW Charging

Charging by Designated Bags

General Waste

Wrapped in designated bags



Charged at \$0.11 per litre

9 different common sizes (ranging from 3-litre to 100-litre)

2 Designs: T-shirt bag and Flat-top bag

Designated bags are also available in 240-litre and 640-litre, charged at \$26 and \$73 per bag respectively. Application and approval by EPD is needed for purchasing these two types of bags

Oversized Waste

Affix with a designated label on each piece of oversized waste

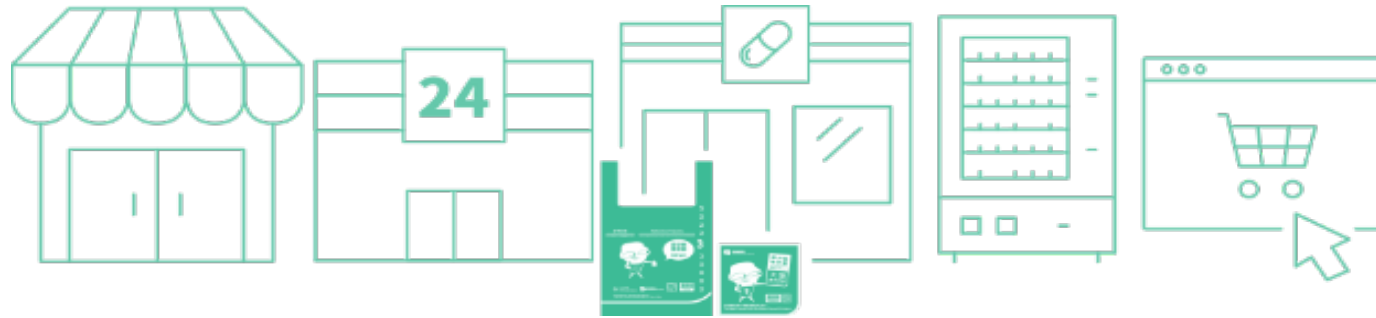


Each designated label is priced at a uniform rate of \$11



Charging by Designated Bags

Authorized Sales Points/Platform for Designated Bags and Designated Labels



- ◆ Available for sale on authorised online platforms and at a few thousands of authorised sales points
 - Including supermarkets, convenience stores, pharmacies, etc.
- ◆ Visit EPD's MSW website for the details of general retail and bulk for designated bags / designated labels



Any company, organisation, or individual member of the public should only purchase designated bags and designated labels from sales points/online platforms authorized by the EPD to avoid purchasing counterfeit products.



Bulk Purchase of Designated Bags and/ or Designated Labels

Please fill in the required information according to the application form and complete the application.



Legislations



Best Practice Guides



Application Forms/
Other References



Videos



Publicity Materials



Useful Links



Frequently Asked Questions



Application Forms (Bulk Purchase)



Bulk Purchase of Designated
Bags and/or Designated Labels

Bulk Purchase of Designated
Bags for Distribution to
Residents of Private Residential
Premises



垃圾收費
MSW CHARGING



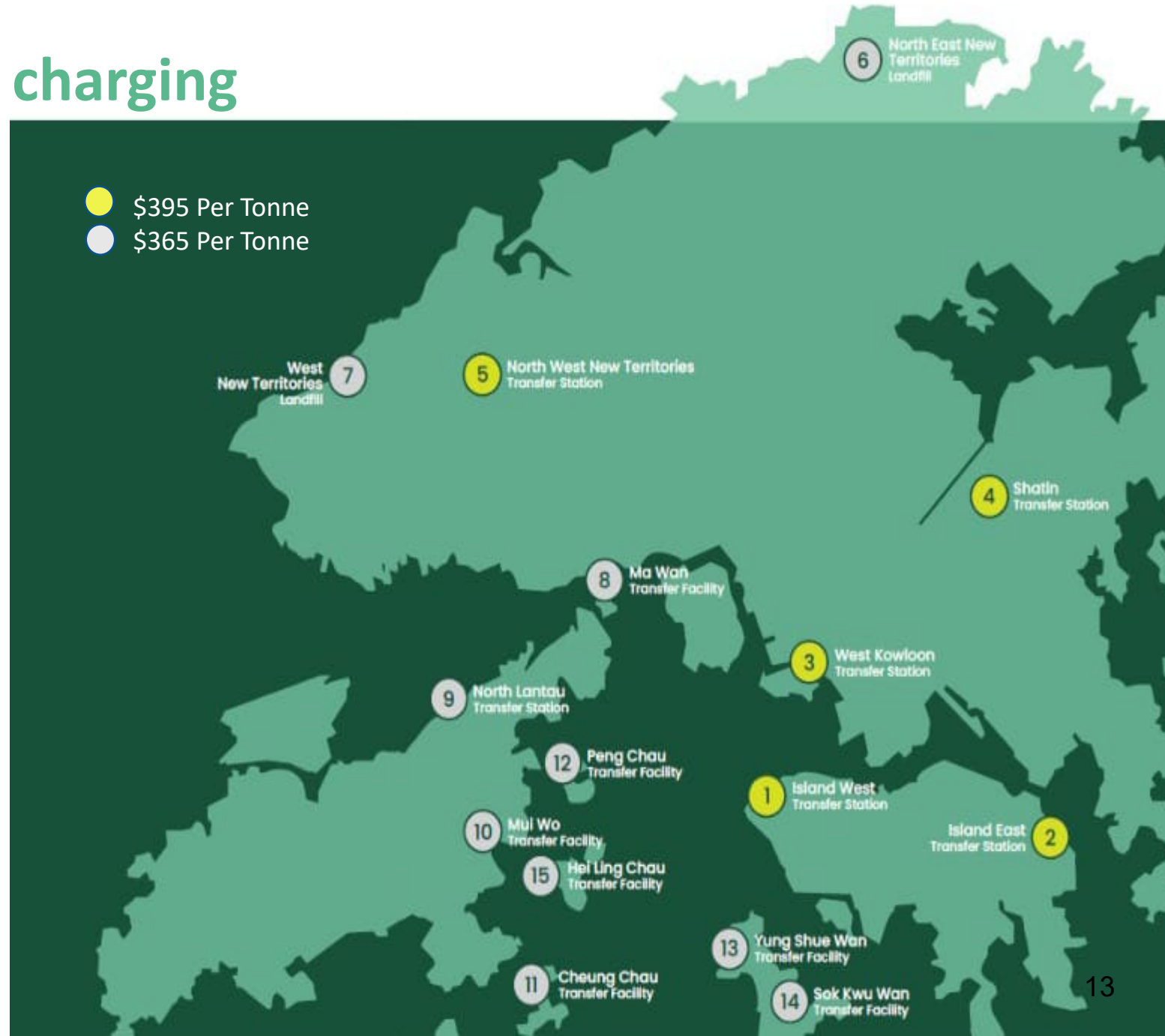
環境保護署
Environmental Protection Department



Overview of MSW charging

Charging by Weight

- Designated bags/ Designated labels are not applicable
- According to the disposal location, the "gate fee" charged by weight of the waste is as follows:
 - \$395 Per Tonne
 - \$365 Per Tonne
- Apportionment of "Gate-fee"
 - Hostel should discuss with the PMC /incorporated owners the apportionment arrangements.



Legislative Requirements



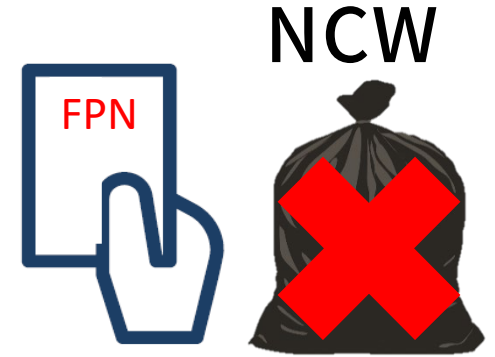
Legislative Requirements

Charging by Designated Bags : Waste is directly disposed of by the staff of hostels

Staff of hostels **shall not deposit non-compliant waste (NCW)** at the following waste reception areas/enforcement points. Or hand over the NCW to the staff at the FEHD's RCPs, and drivers and staff of relevant RCVs:



Otherwise, it constitutes an offence



FEHD's and its contractors' refuse collection vehicles



FEHD's Off-Street RCPs/Bin Sites



PWC's refuse collection vehicles with rear compactors



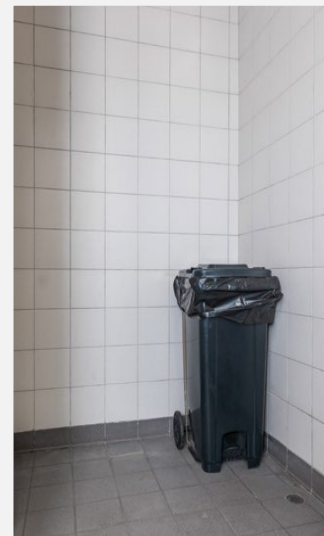


Legislative Requirements

Charging by Designated Bags : For hostels using the waste collection services provided by the premises

- ◆ General waste is **required to use designated bags** or affix a **designated label** to each piece of oversized waste before disposing of it at the **communal waste reception areas (enforcement points)**
- ◆ e.g., refuse rooms / inlet of the refuse chute on individual floors, staircase landings, central refuse collection points, oversized waste reception areas, etc., **otherwise, it constitutes an offense.**
- ◆ The person in charge of the hostel will also **constitute an offence** if he/she instructed frontline staff to dispose the waste without wrapped in designated bags.

Communal waste reception areas

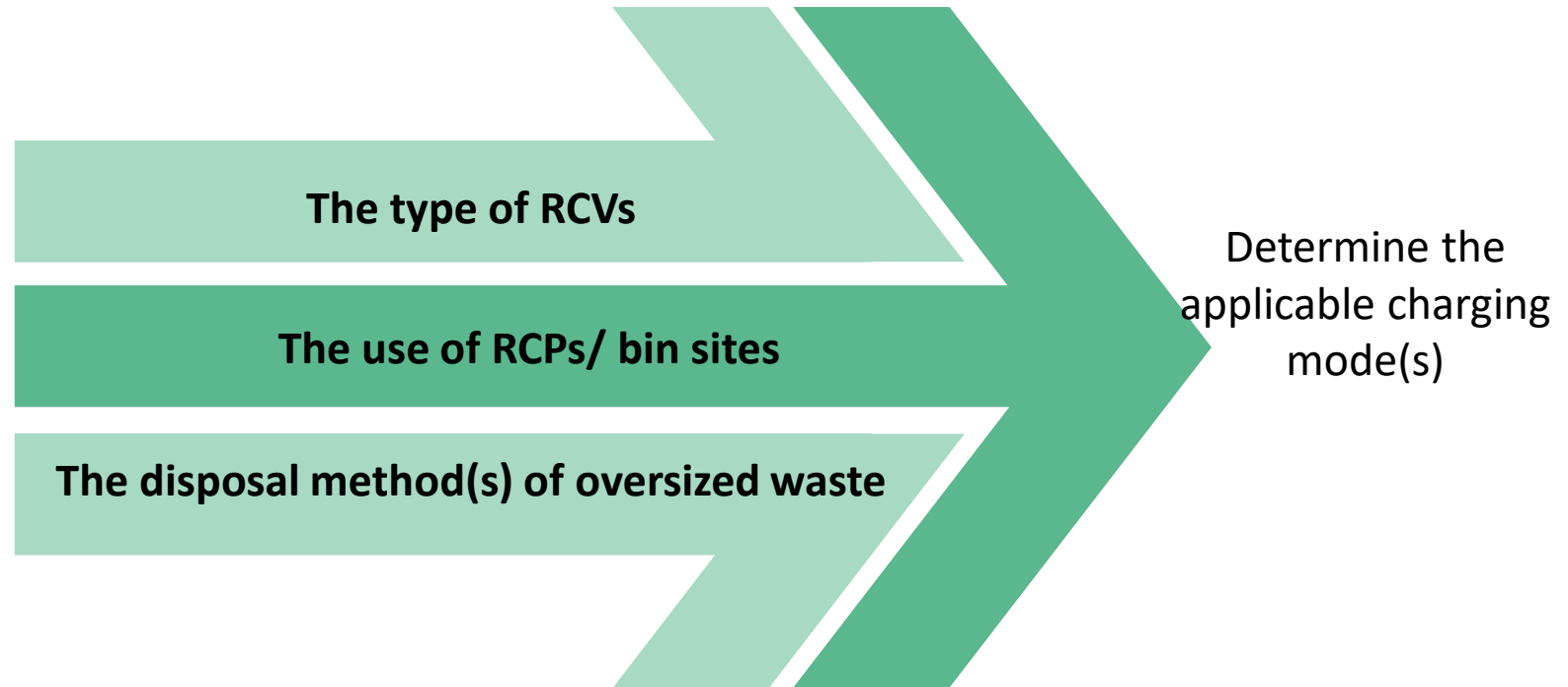


Implementation of MSW Charging in Hostels



Implementation of MSW Charging in Hostels

Determination of the Applicable Charging Mode(s)





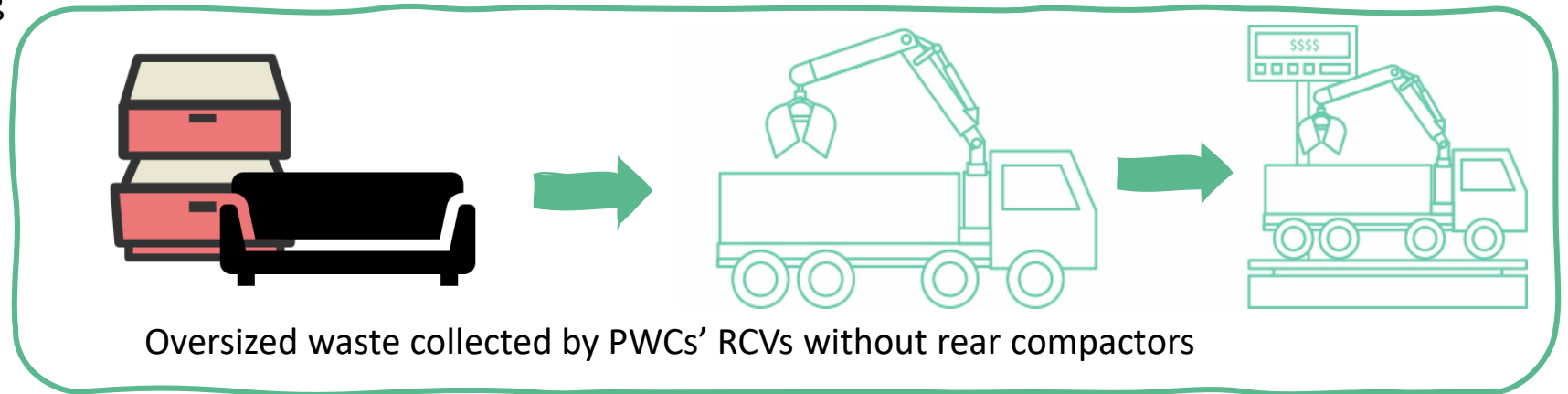
Implementation of MSW Charging in Hostels

More than one applicable MSW Charging modes

- ◆ There may be more than one applicable MSW charging modes depending on the existing waste collection modes of the premises



- ◆ The person in charge of the hostel should inform the staff about the collection arrangements and charging modes for different types of waste





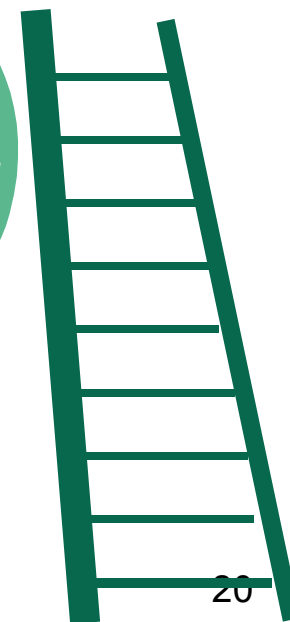
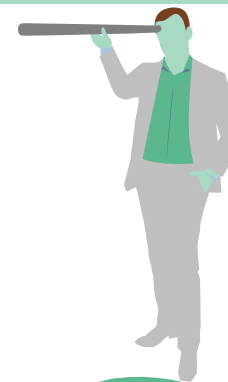
Implementation of MSW Charging in Hostels

Implementation “Charging by Designated Bags”

1. Monitor and Guide Frontline Staff to follow the Legislative Requirements

- ◆ Formulate implementation, management, and monitoring plans and update employees on the change in waste management. (e.g., separating recyclables).
- ◆ Formulate relevant notices and guidelines
- ◆ Enhance training to strengthen the knowledge of staff to ensure that they clearly understand the legislative requirements and guidelines

Person in charge or management staff of Hostel



2. Waste collection arrangements for cleansing workers

Generally, the amount of waste generated **in hostel** is relatively small, and **the accommodation service fee also includes waste disposal services.**

Source of the waste

Corresponding Actions

Guest room

- ◆ **Method 1:** Cleansing workers may line the containers in guest rooms with designated bags and use transparent garbage bags to collect waste wrapped in designated bags.
- ◆ **Method 2:** Cleansing workers may **use large size designated bags (e.g. 100-Litre DBs)** for collecting all the waste / waste from several guest rooms at once.

Method 1

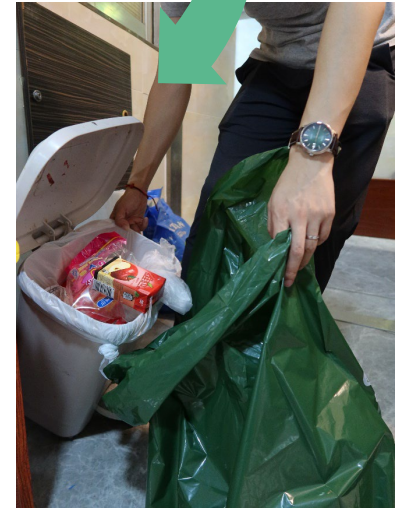


Method 2



2. Waste collection arrangements for cleansing workers

Source of the waste	Corresponding Actions
<ul style="list-style-type: none">➤ Other Common areas (Lobby etc.)	<ul style="list-style-type: none">◆ This type of container for residents/employees to dispose of garbage does not need to be lined with designated bags first.
<ul style="list-style-type: none">➤ Office area	<ul style="list-style-type: none">◆ Cleansing workers may collect all the wastes using a large designated bag at once.



Source of the waste

All the waste of hostel
(Including guest rooms and common areas)

Corresponding Actions

- All the waste collected in hostel should properly wrapped by designated bags before disposing of it at the communal waste reception areas or FEHD refuse collection point.

(Cleansing workers may use transparent garbage bags to collect waste which has been wrapped in designated bags. This helps ensure that all the waste inside is wrapped in designated bags.



PMCs should delineate the communal waste reception areas in the premises and displaying signages at prominent locations to remind tenants (including their staff) that they are required to properly wrap their waste using designated bags or affix it with designated labels when disposing of waste at these reception areas

Signages



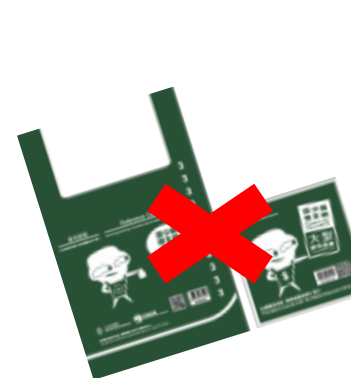


Implementation of MSW Charging in Hostels

Implementing "Charging by Weight"

1. Waste Collection

- Designated bags/designated labels are not applicable under the "charging by weight" arrangement - do not need to wrap their waste in designated bags or affix with a designated label on each piece of oversized waste; otherwise it would lead to double payment
- Cleansing workers should discuss with PMCs / owners' corporations the arrangements for waste collection services



2. Arrangements for "Gate-Fee" Apportionment Mechanism(s)

- The management staff of the premises should make advance arrangements with the PMCs for the payment of "gate fees" to them afterwards

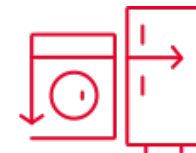


Waste Reduction and Recycling Arrangements



Waste Reduction and Recycling Arrangements

- ◆ **Active participation in clean recycling** (paper, plastic bottles, aluminum cans, glass bottles) can reduce MSW charging fees.
- ◆ Non-recyclable wastes should not be disposed of in recycle bins.
- ◆ Recycling can reduce waste and save money using designated bags with smaller capacity for waste disposal.





Best Practice Guide on Implementation of Waste Reduction

1. Guest rooms/ Common area



- ✓ Set up recycling bins in rooms/common areas in hostel (such as guest rooms/lobby, etc.) to facilitate residents/visitors to recycle.
- ✓ Cleansing workers may separate the recyclables from general wastes and place them in another plastic bag for recycling.



Best Practice Guide on Implementation of Waste Reduction

2. Reduce the distribution of disposable items



- ✓ May reduce the distribution of disposable items (such as bottled water), and provide reusable items as much as possible, or post signages inside the guest rooms to encourage the guests reduce the usage or recycle them after use.



Waste Reduction and Recycling Arrangements

General Waste Reduction and Recycling Information

- Hong Kong Waste Reduction Website



Thank you for supporting
MSW charging